

SMS & CLAMP STAINLESS STEEL SIGHT GLASS

FEATURES

The SK I sight glass is designed for the visual inspection of flow for fluids inside stainless steel piping. It is especially designed for low-pressure application in chemistry, pharmacy and food processes. Tubular construction with stainless steel body and toughened glass tube.

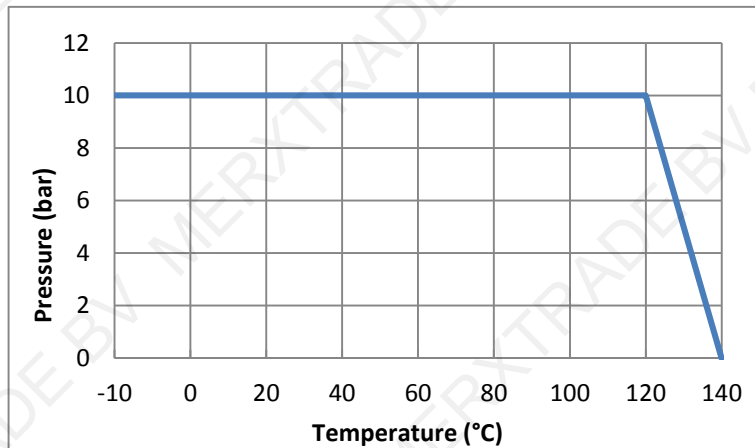
AVAILABLE MODELS

SMS connection to weld : External \varnothing (See table below)

Clamp connection: External \varnothing (See table below)

LIMITS OF USE

Fluid WP:	10 bar
Fluid WT° (Toughened glass):	- 10 °C / + 140 °C



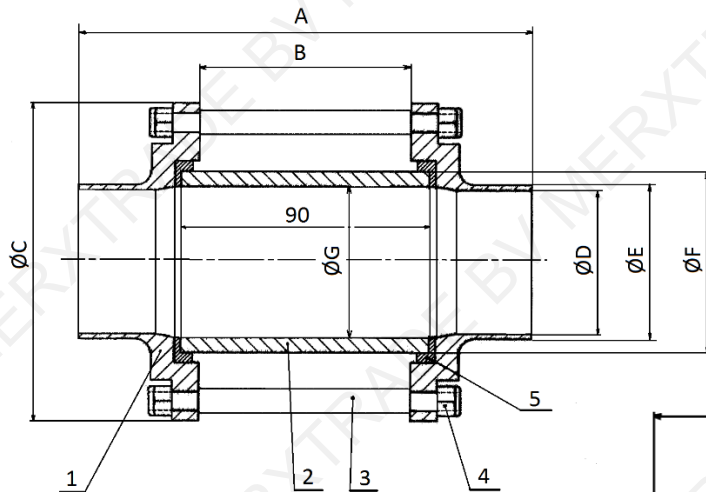
DIRECTIVES AND MANUFACTURING STANDARDS

OBJECT	Standard	OBJECT	Standard
Pressure Equipment Directive 97/23/EC	<u>DN 25</u> : A3 § 3 non-submitted	Stainless steel grades	EN 1503-1
	<u>DN 40 to 100</u> : A3 § 3 prohibited use on gas from group 1	Material certificate	EN 10204 § 3.1
		SMS connection to weld	EN 10357 series D
		Clamp connection	ISO 1127

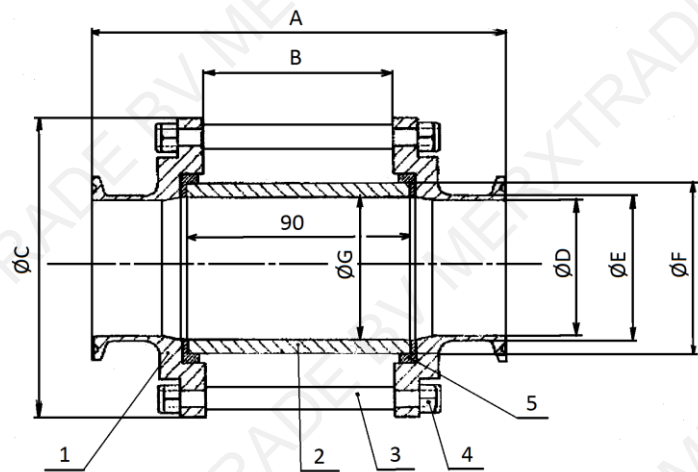
SMS & CLAMP STAINLESS STEEL SIGHT GLASS

DIMENSIONS (mm) AND CONNECTIONS

Ø Ext E (SMS)	Ø Ext E (Clamp)	A (SMS)	A (Clamp)	B	C	D	F	G	Weight (kg) (SMS)	Weight (kg) (Clamp)
25.4	50.5	150	145	82	79	22.1	32	26	01:09	01:09
38.1	50.5	158	153	82	85	34.7	40	34	01:17	01:26
50.8	64	162	157	82	105	47.6	60	50	1.70	1.87
63.5	77.5	162	157	82	112	60.2	75	65	1.72	1.92
76.2	91	164	159	82	125	72	85	75.4	02:09	2.4
101.6	119	170	165	82	157	97.6	110	100	03:15	3.2



Connection to WELD



CLAMP connection

CONSTRUCTION

No.	Name	Qty	Material
1	Body	1	ASTM 316 L stainless steel
2	Tube	1	Toughened glass
3	Tie-bolts	4	304 SS
4	Nut	4	304 SS
5	Gasket	2	FDA edible silicone

SMS & CLAMP STAINLESS STEEL SIGHT GLASS

INSTALLATION

- 1 - Before any installation, cut-off the piping upstream and downstream.
- 2 - Depressurize and drain the piping.
- 3 - Wait for it to cool down to ambient temperature.
- 4 - Wear the safety equipment required for this type intervention (gloves and goggles).
- 5 - Horizontal or vertical installation.
- 6 - It is recommended to install a filter upstream so as to prevent glass breaking by a foreign body which could be present inside the piping.
- 7 - **Version to weld:** Unscrew the nuts (reference mark 4) and remove the tie-bolts (reference mark 3) Remove the gaskets (reference mark 5) and the glass tube (reference mark 2). Weld the ends (reference mark 1) onto the piping following the alignment of the drill holes for the passage and the face-to-face dimension of the device. to reassembly, fix the gaskets inside the ends (reference mark 1), insert the tube, and then the tie-bolts. Screw back the nuts (reference mark 4) without crushing the gaskets (reference mark 5) and without pressing to much against the tube (reference mark 2).

Clamp version: Use clamps of the same dimension than the device, and make sure that the length provided for the piping is compliant with the device face-to-face so that no traction or abnormal pressure is applied to the device. Attach and tighten the collars normally.

SERVICING

- 1 - Cut-off the fluid circulation inside the piping upstream from the device.
- 2 - Drain the piping downstream so as to depressurize the device and wait for its cooling down.
- 3 - Unscrew the nuts (reference mark 4) and remove the tie-bolts (reference mark 3).
- 4 - Remove the gaskets (reference mark 5) and the glass tube (reference mark 2).
- 5 - Clean the tube (reference mark 2) or replace it by an identical model.
- 6 - To reassemble, position the gaskets (reference mark 5) in the ends (reference mark 1) and insert the tube (reference mark 2).
- 7 - Put back the tie-bolts (rep3) and the nuts (reference mark 4) and screw back without crushing the gaskets (reference mark 5), and without pressing to much against the tube (reference mark 2).
- 8 - Put the installation back in service.
- 9 - Protect the installation so that no impact can break the glass tube of the device.
- 10 - Do not generate any cold or hot thermal shock (risk of glass breaking).
- 11 - Periodically check the clearness of the glass, and, if necessary, clean it.

SPARE PARTS

SKI - SMS & Clamp kit (1 x Tube - 2 x Gaskets)		
Int ø	Ext ø	Code
26	32	981086
34	40	981087
50	60	981088
65	75	981089
75.4	85	981090
100	110	981091
Tube length (90mm)		